



# PETROLEUM 15

## 3" x 3" Self Priming Pump

Petroleum 15 self-priming centrifugal pumps are capable of creating vacuum sufficient to lift liquids from heights up to 25 feet above the source.

A Petroleum 15 PumPAK® is a fully assembled and run tested pump end that can be easily coupled to a number of drivers such as hydraulic motors, 184TC and 215C frame motors and gas engines. A bearing pedestal is also available for T-frame motor or belt drive.

Standard features include SS drive sleeve, SS fasteners, renewable wear plate, and a semi-open dynamically balanced impeller.

The Petroleum 15 Pump is available in three distinct models: PE, PG and PO:

Model PE Pumps - Compatible For Ethanol & E 85

Model PG Pumps - Compatible For Gasoline, Kerosene, Avgas & Jet Fuel

Model PO Pumps - Compatible For BioDiesel, Fuel Oil & Diesel

### SPECIFICATIONS:

<b>Suction / Discharge</b>	3" x 3" NPT
<b>Materials of Construction</b>	Cast iron, Ductile iron
<b>Flow</b>	Up to 320 GPM (72.7 m <sup>3</sup> /h)
<b>Head Feet</b>	Up to 145' (44 m)
<b>Impeller</b>	PE 15 - semi-open cast iron, 316 SS (optional) PG 15 - semi-open cast iron, aluminum (optional) PO 15 - semi-open cast iron
<b>Motor</b>	Up to 7.5 HP (5.6 kW)
<b>Drive Options</b>	Close coupled 184TC and 215C Engine mount 11 HP (8.2 kW) Engine mount 13 HP (9.7 kW) Engine mount 5.5 HP (4.85 kW) Engine mount 6.5 HP (4.78 kW) Hydraulic motor .73 cu. in. (11.96 cm <sup>3</sup> ) Pedestal PumPAK® (without motor)
<b>Seal</b>	PE 15 - carbon / silicon carbide / Viton PG 15 - carbon / silicon carbide / Viton PO 15 - carbon / Ni-Resist / Viton
<b>Compatible For</b>	PE 15 - ethanol, E 85 PG 15 - gasoline, avgas, kerosene, jet A/8 PO 15 - biodiesel, fuel oil, diesel

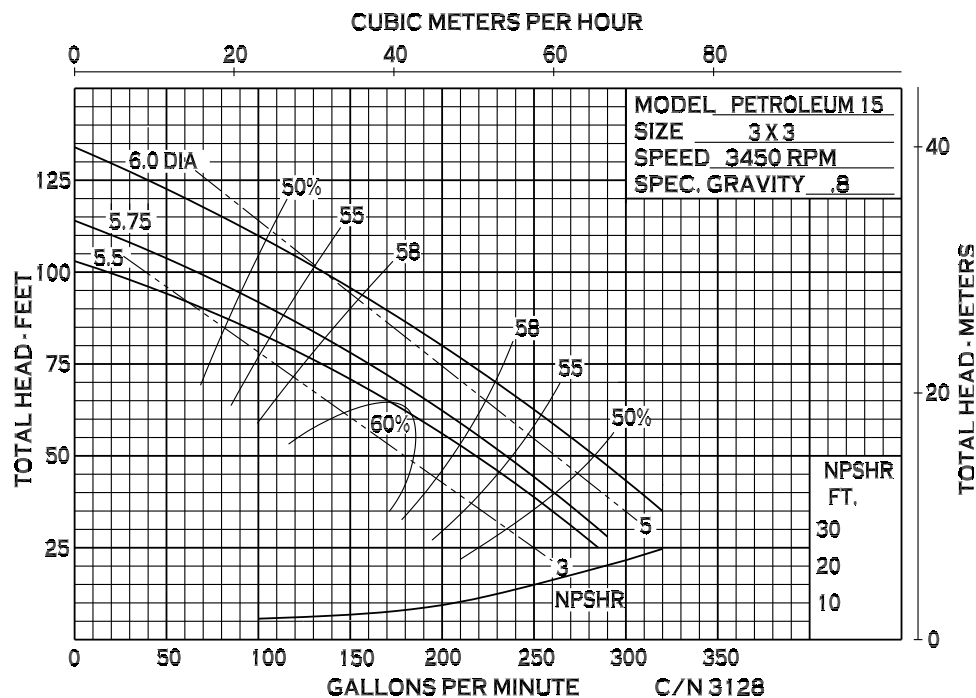
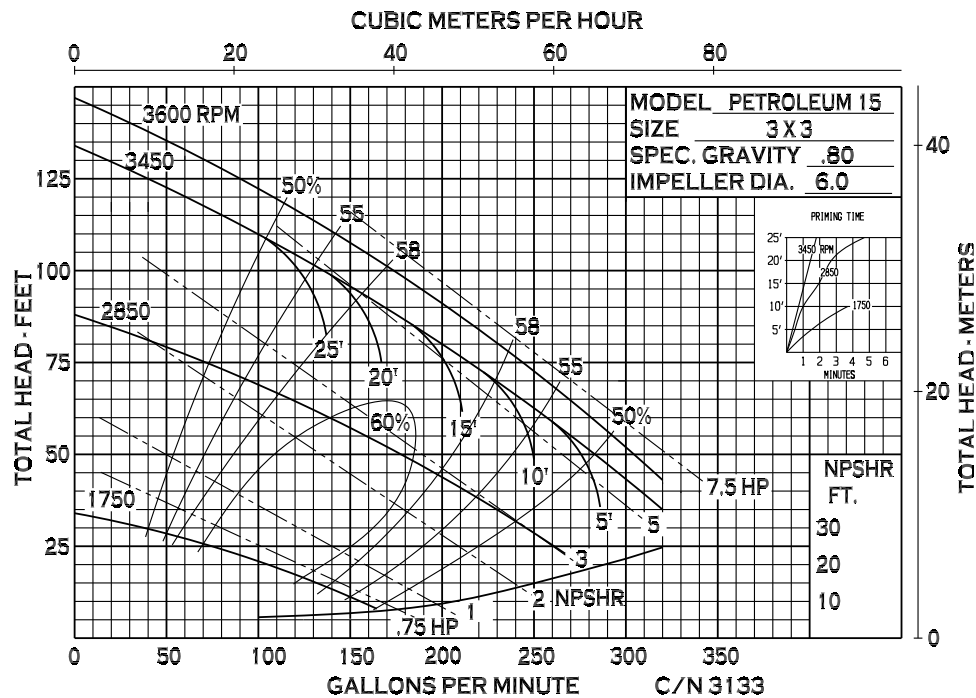
### Features

- Gas engine for diesel fuel transfer
- Non-spark clamp (on PG models)
- Renewable wear plate
- Stainless steel drive sleeve
- Stainless steel fasteners
- Up to a 25' (8 m) suction lift

### Application:

- Agricultural
- Commercial
- Industrial
- OEM

## PERFORMANCE CURVES

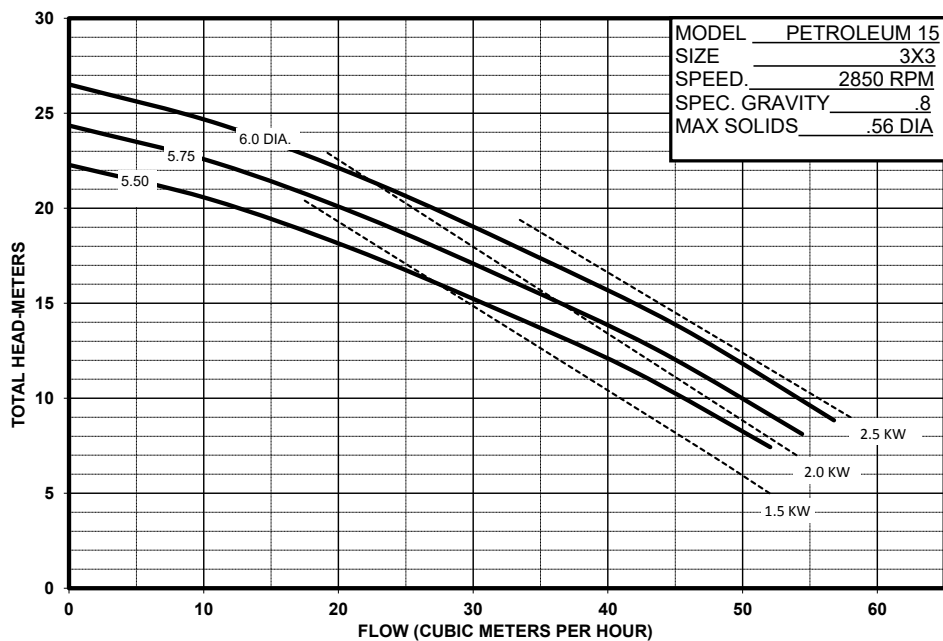




An Ingersoll Rand Business

# PETROLEUM 15

## PERFORMANCE CURVES



12500 South Pulaski Road  
Alsip, IL 60803, USA  
Phone (800) 563-8006

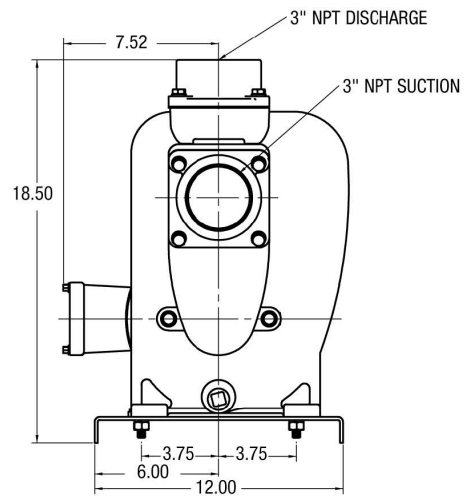
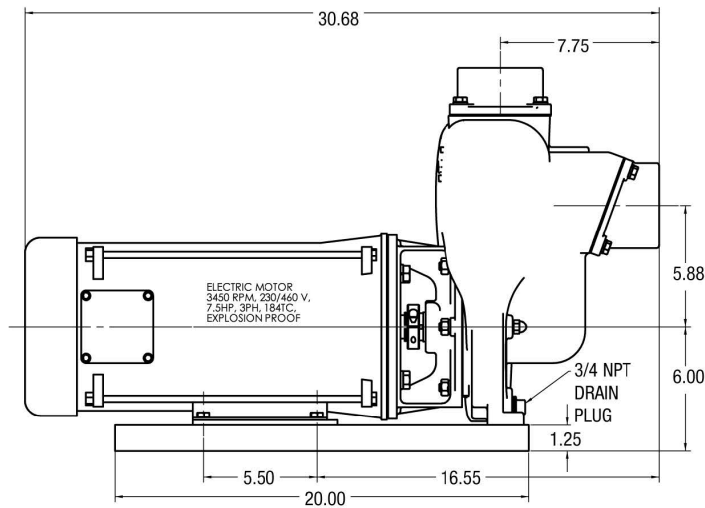


An Ingersoll Rand Business

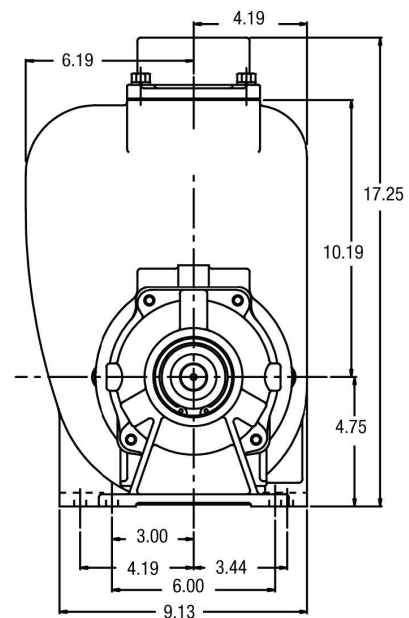
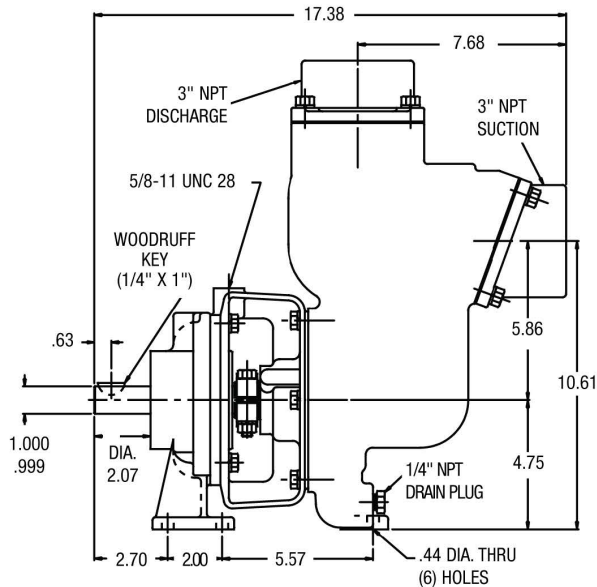
# PETROLEUM 15

## DIMENSIONS

### CLOSE COUPLED - ELECTRIC MOTOR



### PEDESTAL-MOUNT



\* For complete parts lists and troubleshooting guidance, please refer to the MP Pumps Installation Operation & Maintenance (IOM) Manual.



12500 South Pulaski Road  
Alsip, IL 60803, USA  
Phone (800) 563-8006